



# BLUE SPRINGS PAD SITE

9000 SW 7 Highway, Blue Springs, Missouri



## SALE PRICE: \$296,100 | 1.89 ACRES

### DEMOGRAPHICS

	1 mile	3 miles	5 miles
Estimated Population	1,506	16,236	73,898
Avg. Household Income	\$118,034	\$117,250	\$95,772

- Great pad site in front of new subdivision
- 7 Highway frontage
- Fast growing area in Jackson County

 [CLICK HERE TO VIEW MORE LISTING INFORMATION](#)

For More Information Contact:

*Exclusive Agents*

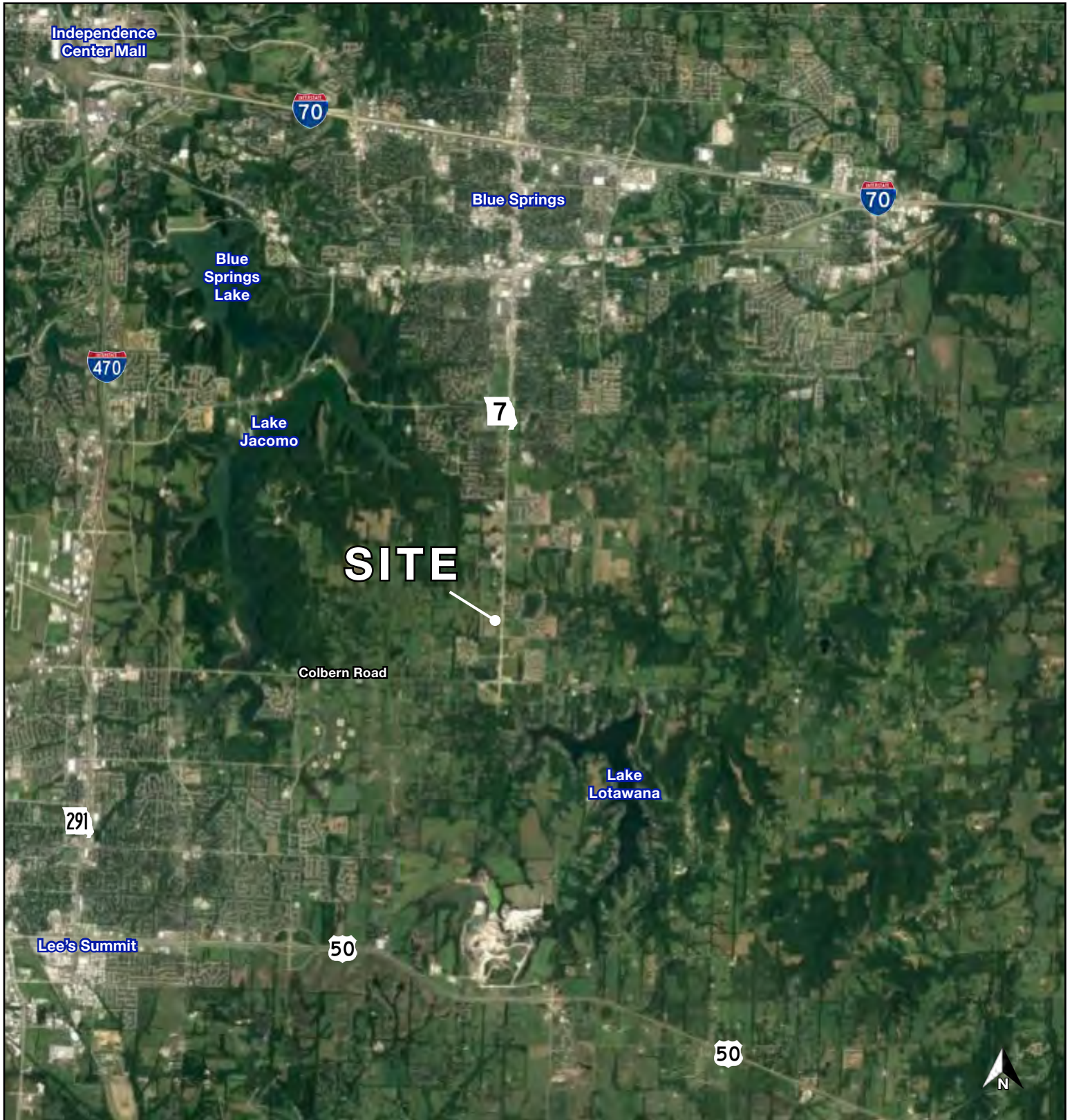
**BILL MAAS, CCIM** | 816.412.7392 | [bmaas@blockandco.com](mailto:bmaas@blockandco.com)

**DAVID BLOCK** | 816.412.7400 | [dblock@blockandco.com](mailto:dblock@blockandco.com)





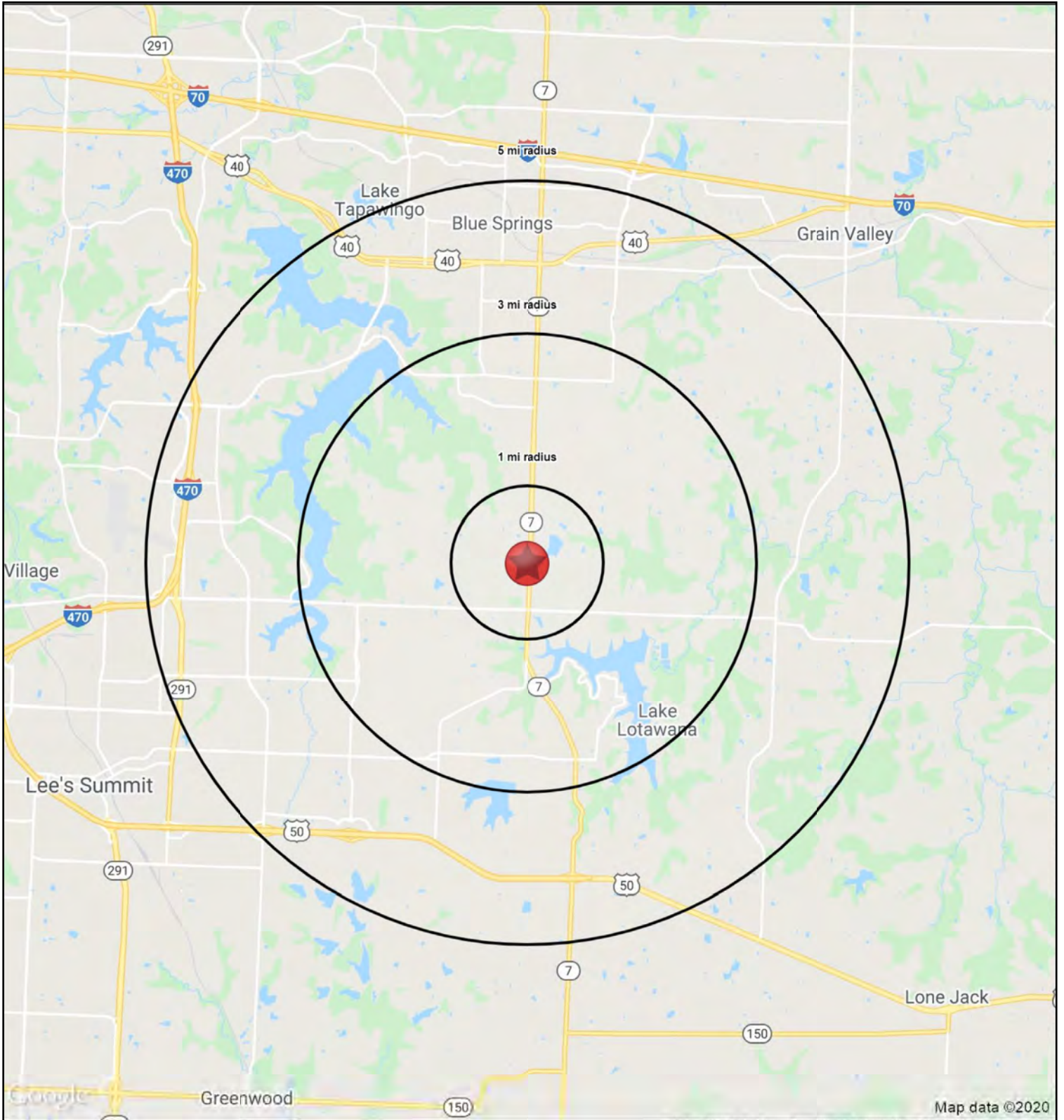
## AERIAL













# BLUE SPRINGS PAD SITE

9000 SW 7 Highway, Blue Springs, Missouri

RS1

9000 SW 7 Highway		1 mi radius	3 mi radius	5 mi radius
Blue Springs, MO 64064				
POPULATION	2020 Estimated Population	1,506	16,236	73,898
	2025 Projected Population	1,509	16,328	74,369
	2010 Census Population	707	13,281	67,157
	2000 Census Population	629	11,834	59,311
	Projected Annual Growth 2020 to 2025	-	0.1%	0.1%
	Historical Annual Growth 2000 to 2020	7.0%	1.9%	1.2%
	2020 Median Age	39.9	37.9	35.5
HOUSEHOLDS	2020 Estimated Households	602	6,171	28,316
	2025 Projected Households	594	6,109	28,059
	2010 Census Households	268	4,831	24,517
	2000 Census Households	219	4,147	21,018
	Projected Annual Growth 2020 to 2025	-0.3%	-0.2%	-0.2%
	Historical Annual Growth 2000 to 2020	8.7%	2.4%	1.7%
RACE AND ETHNICITY	2020 Estimated White	90.1%	90.4%	86.7%
	2020 Estimated Black or African American	4.8%	4.3%	6.3%
	2020 Estimated Asian or Pacific Islander	1.5%	1.3%	2.1%
	2020 Estimated American Indian or Native Alaskan	0.2%	0.3%	0.4%
	2020 Estimated Other Races	3.3%	3.8%	4.5%
	2020 Estimated Hispanic	4.2%	4.2%	5.0%
INCOME	2020 Estimated Average Household Income	\$118,034	\$117,250	\$95,772
	2020 Estimated Median Household Income	\$94,506	\$98,796	\$84,596
	2020 Estimated Per Capita Income	\$47,243	\$44,580	\$36,712
EDUCATION (AGE 25+)	2020 Estimated Elementary (Grade Level 0 to 8)	0.6%	0.7%	0.9%
	2020 Estimated Some High School (Grade Level 9 to 11)	2.5%	3.1%	3.2%
	2020 Estimated High School Graduate	23.0%	20.1%	23.9%
	2020 Estimated Some College	23.7%	23.6%	25.2%
	2020 Estimated Associates Degree Only	8.3%	8.3%	8.7%
	2020 Estimated Bachelors Degree Only	25.0%	27.7%	25.1%
	2020 Estimated Graduate Degree	16.9%	16.4%	12.9%
BUSINESS	2020 Estimated Total Businesses	14	234	2,248
	2020 Estimated Total Employees	130	2,082	23,201
	2020 Estimated Employee Population per Business	9.6	8.9	10.3
	2020 Estimated Residential Population per Business	110.8	69.3	32.9

